

Ordering Information

Arrow-Clark™ VectorFlow® Hemodialysis Catheter with SmartSeal® Hemostatic Sheath

RETROGRADE	DESCRIPTION	TIP-TO-CUFF INSERTION LENGTH (CM)	ANTEGRADE	DESCRIPTION	TIP-TO-CUFF INSERTION LENGTH (CM)
CS-15192-VF	15 Fr. x 19 cm Retrograde Radiopaque Polyurethane Catheter	19	CS-15192-VFI	15 Fr. x 19 cm Antegrade Radiopaque Polyurethane Catheter	19
CS-15232-VF	15 Fr. x 23 cm Retrograde Radiopaque Polyurethane Catheter	23	CS-15232-VFI	15 Fr. x 23 cm Antegrade Radiopaque Polyurethane Catheter	23
CS-15272-VF	15 Fr. x 27 cm Retrograde Radiopaque Polyurethane Catheter	27	CS-15272-VFI	15 Fr. x 27 cm Antegrade Radiopaque Polyurethane Catheter	27
CS-15312-VF	15 Fr. x 31 cm Retrograde Radiopaque Polyurethane Catheter	31	CS-15312-VFI	15 Fr. x 31 cm Antegrade Radiopaque Polyurethane Catheter	31
CS-15422-VF	15 Fr. x 42 cm Retrograde Radiopaque Polyurethane Catheter	42	CS-15422-VFI	15 Fr. x 42 cm Antegrade Radiopaque Polyurethane Catheter	42
CS-15552-VF	15 Fr. x 55 cm Retrograde Radiopaque Polyurethane Catheter	55	CS-15552-VFI	15 Fr. x 55 cm Antegrade Radiopaque Polyurethane Catheter	55

Packaged in quantities of 1 unit per box.

Arrow-Clark™ VectorFlow® Hemodialysis Catheter with SmartSeal® Hemostatic Sheath and Arrow Simplicity® Micro-Introducer Kit

RETROGRADE WITH ARROW SIMPLICITY KIT	DESCRIPTION	TIP-TO-CUFF INSERTION LENGTH (CM)	ANTEGRADE WITH ARROW SIMPLICITY KIT	DESCRIPTION	TIP-TO-CUFF INSERTION LENGTH (CM)
CS-15192-VFM	15 Fr. x 19 cm Retrograde Radiopaque Polyurethane Catheter with Color-Coded 21 Ga. Micro-Puncture Introducer Set	19	CS-15192-VFIM	15 Fr. x 19 cm Antegrade Radiopaque Polyurethane Catheter with Color-Coded 21 Ga. Micro-Puncture Introducer Set	19
CS-15232-VFM	15 Fr. x 23 cm Retrograde Radiopaque Polyurethane Catheter with Color-Coded 21 Ga. Micro-Puncture Introducer Set	23	CS-15232-VFIM	15 Fr. x 23 cm Antegrade Radiopaque Polyurethane Catheter with Color-Coded 21 Ga. Micro-Puncture Introducer Set	23
CS-15272-VFM	15 Fr. x 27 cm Retrograde Radiopaque Polyurethane Catheter with Color-Coded 21 Ga. Micro-Puncture Introducer Set	27	CS-15272-VFIM	15 Fr. x 27 cm Antegrade Radiopaque Polyurethane Catheter with Color-Coded 21 Ga. Micro-Puncture Introducer Set	27
CS-15312-VFM	15 Fr. x 31 cm Retrograde Radiopaque Polyurethane Catheter with Color-Coded 21 Ga. Micro-Puncture Introducer Set	31	CS-15312-VFIM	15 Fr. x 31 cm Antegrade Radiopaque Polyurethane Catheter with Color-Coded 21 Ga. Micro-Puncture Introducer Set	31

Packaged in quantities of 1 unit per box.

Arrow-Clark™ VectorFlow® Hemodialysis Catheter with Replacement Hub for Retrograde Catheters

RETROGRADE HUB REPLACEMENTS	DESCRIPTION	TIP-TO-CUFF INSERTION LENGTH (CM)
VF-15192	Arrow-Clark VectorFlow Replacement Hub for part # CS-15192-VFM (19 cm)	19
VF-15232	Arrow-Clark VectorFlow Replacement Hub for part # CS-15232-VFM (23 cm)	23
VF-15272	Arrow-Clark VectorFlow Replacement Hub for part # CS-15272-VFM (27 cm)	27
VF-15312	Arrow-Clark VectorFlow Replacement Hub for part # CS-15312-VFM (31 cm)	31
VF-15422	Arrow-Clark VectorFlow Replacement Hub for part # CS-15422-VFM (42 cm)	42
VF-15552	Arrow-Clark VectorFlow Replacement Hub for part # CS-15552-VFM (55 cm)	55

Packaged in quantities of 1 unit per box.

Note: Arrow-Clark™ VectorFlow® Hemodialysis Catheter Kits contain: Catheter, SmartSeal® Dialysis Sheath, Spring Wire Guide, Introducer needle, 12 Fr. Tissue Dilator, 14 Fr. Tissue Dilator, Luer Lock Caps, SharpsAway™ II Locking Disposal Cup, Tuner, Safety Scalpel, Patient ID Card, Tegaderm® Dressing.

Teleflex is a global provider of medical technologies designed to improve the health and quality of people’s lives. We apply purpose driven innovation – a relentless pursuit of identifying unmet clinical needs – to benefit patients and healthcare providers. Our portfolio is diverse, with solutions in the fields of vascular and interventional access, surgical, anesthesia, cardiac care, urology, emergency medicine and respiratory care. Teleflex employees worldwide are united in the understanding that what we do every day makes a difference. For more information, please visit teleflex.com.

Teleflex is the home of Arrow®, Deknatel®, Hudson RCI®, LMA®, Pilling®, Rüscher®, and Weck® – trusted brands united by a common sense of purpose.

Corporate Office

Phone +1 610 225 6800, 550 E. Swedesford Road, Suite 400, Wayne, PA 19087, USA

Regional Offices

United States: Phone +1 919 544 8000, Toll Free 866 246 6990, cs@teleflex.com, 3015 Carrington Mill Boulevard, Morrisville, NC 27560, USA

Latin America: Phone +1 919 433 4999, la.cs@teleflex.com, 3015 Carrington Mill Boulevard, Morrisville, NC 27560, USA

International: Phone +353 (0)9 06 46 08 00, orders.intl@teleflex.com, Teleflex Medical Europe Ltd., IDA Business and Technology Park, Dublin Road, Athlone, Co Westmeath, Ireland

Australia 1300 360 226

Austria +43 (0)1 402 47 72

Belgium +32 (0)2 333 24 60

Canada +1 (0)800 387 9699

China (Shanghai) +86 (0)21 6163 0965

China (Beijing) +86 (0)10 6418 5699

Czech Republic +420 (0)495 759 111

France +33 (0)5 62 18 79 40

Germany +49 (0)7151 406 0

Greece +30 210 67 77 717

India +91 (0)44 2836 5040

Italy +39 0362 58911

Japan +81 (0)3 6632 3600

Korea +82 2 536 7550

Mexico +52 55 5002 3500

Netherlands +31 (0)88 00 215 00

New Zealand 0800 601 100

Poland +48 22 4624032

Portugal +351 22 541 90 85

Singapore (SEA non-direct sales countries) +65 6439 3000

Slovak Republic +421 (0)3377 254 28

South Africa +27 (0)11 807 4887

Spain +34 918 300 451

Switzerland +41 (0)31 818 40 90

United Kingdom +44 (0)1494 53 27 61

For more information, please visit teleflex.com.

References:

- Clark TWI, Redmond JW, Mantell MP, et al. Initial clinical experience: symmetric-tip dialysis catheter with helical flow characteristics improves patient outcomes. *J Vasc Interv Radiol.* 2015;26(10):1501-1508. Timothy Clark, MD, is a paid consultant and receives royalty payments from Teleflex or its affiliates for the Arrow-Clark VectorFlow Chronic Hemodialysis Catheter.
- Ross JR, Puga TA, & Philbeck TE. Longitudinal dialysis adequacy and clinical performance of the VectorFlow hemodialysis catheter: a prospective study. *J Vasc Access.* 2017;26:0. Epub ahead of print. Study sponsored by Teleflex. Ross JR was formerly a paid consultant of Teleflex. Puga TA and Philbeck TE are employees of Teleflex.
- Clark TWI, Izu G, Gallo, D, et al. Comparison of symmetric hemodialysis catheters using computational fluid dynamics., *J Vasc Interv Radiol.* 2015;26(2):252-259. Data on file at Teleflex. Computer modeling may not be indicative of clinical performance. Timothy Clark, MD, is a paid consultant and receives royalty payments from Teleflex or its affiliates for the Arrow-Clark VectorFlow Chronic Hemodialysis Catheter.
- KDOQI Clinical Practice Guidelines and Clinical Practice Recommendations for 2006 Updates: Hemodialysis Adequacy, Peritoneal Dialysis Adequacy and Vascular Access. *Am J Kidney Dis* 48:S1-S322, 2006 (suppl 1). Study sponsored by Teleflex.

Please see the Instructions for Use for a complete listing of the indications, contraindications, warnings and precautions. CAUTION: Federal (USA) law restricts this device to sale by or on the order of a physician.

VectorFlow is a registered trademark of Aegis Medical Technologies, LLC
Tegaderm is a registered trademark of 3M Company.

Teleflex, the Teleflex logo, Arrow, Arrow-Clark, Arrow Simplicity, Deknatel, Hudson RCI, LMA, Pilling, Rüscher, Sharps Away, SmartSeal and Weck are trademarks or registered trademarks of Teleflex Incorporated or its affiliates, in the U.S. and/or other countries. Information in this material is not a substitute for the product Instructions for Use. Not all products may be available in all countries. Please contact your local representative. Revised: 05/2021.

© 2021 Teleflex Incorporated. All rights reserved. MC-001040 Rev 2



Arrow-Clark™ VectorFlow® Chronic Hemodialysis Catheter

Because in chronic hemodialysis catheters, the tip matters

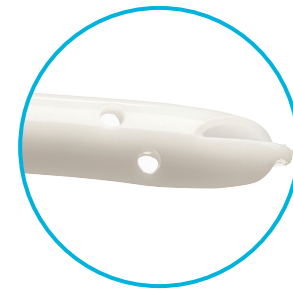


Designed for Advanced Performance

The Arrow-Clark™ VectorFlow® Chronic Hemodialysis Catheter has demonstrated low occlusion and infection rates in multiple clinical studies^{1,2}



Easy to Read
Information on clamp inserts includes lumen fill volume, French size and length



Sidehole Design
Engineered to optimize catheter flow and reduce the loss of lock solution,³ a contributing factor in reducing the risk of thrombus adherence⁴



Minimal Recirculation
Tip design deflects venous blood away from the catheter, in a direction opposite to blood entering the catheter in arterial lumen

VectorFlow Patented Symmetrical Tip Design

- Catheter tip designed to reduce the risk of platelet damage caused by shear stress, potentially helping to reduce the risk of thrombus accumulation on catheter surface²
- Tapered tip for ease of placement over guidewire



Clinical Data Supporting Hemodialysis Adequacy with the Arrow-Clark™ VectorFlow® Chronic Hemodialysis Catheter

Results from a 46-patient, one-center, non-randomized clinical study evaluating hemodialysis adequacy of Arrow-Clark™ VectorFlow® Chronic Hemodialysis Catheter showed a reduction in thrombogenic risk during clinical usage. The Arrow-Clark™ VectorFlow® Catheter demonstrated the following:²

- Mean flow rates of 333 – 392 mL/min over a 90-day observational period*
- Mean Kt/V values consistently ≥ 1.5 over a 90-day observational period*
- An overall intervention-free catheter patency rate of $\geq 88.8\%$ over a 90-day observational period*

* Testing performed at 30, 60 and 90 days, during study.

Arrow-Clark™ VectorFlow® Catheters showed low infection and thrombosis rates²

COMPLICATION	CATHETER DAYS	RATE
Occlusion	0.3/1000	2.2%
Infection	0.7/1000	4.3%
Combined Complications	1.0/1000	6.5%